

SA'S MOST BEAUTIFUL MAGAZINE

THE
HOLIDAY
ISSUE

*
WIN
PRIZES
WORTH
R86 000



Hot+Cool

SUMMER VILLAS, ROOFTOP BARS,
SEASIDE HOTELS
AND SWIMMING POOLS

DESIGN DECONSTRUCTED:
BAUHAUS, THE VESSEL IN NYC,
DOKTER AND MISSES

SA R75
OTHER COUNTRIES
R65.22
EXCLUDING TAX



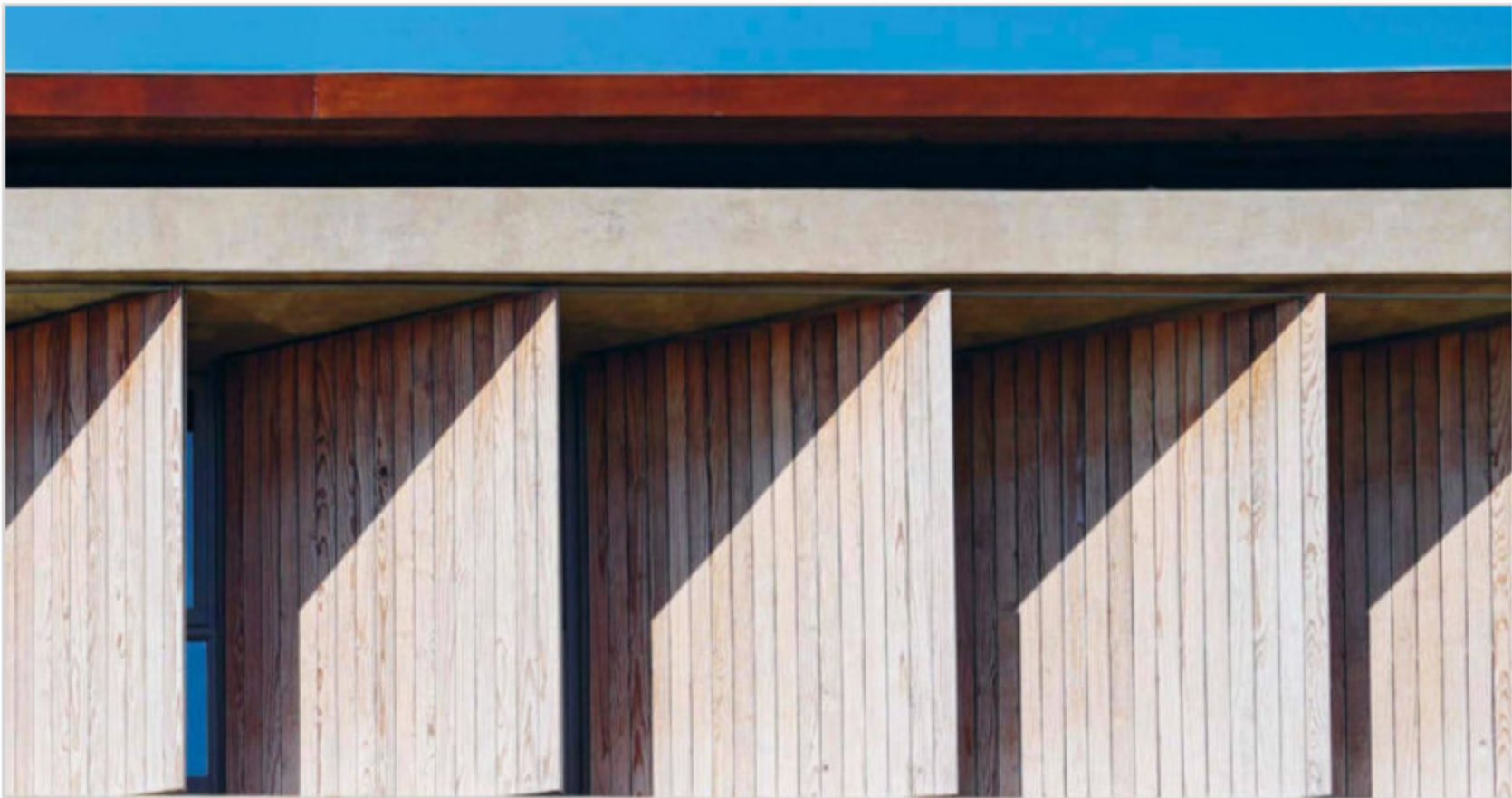
DIABLA OUTDOOR
FURNITURE



WORDS MARTIN JACOBS

Walls of glass fold open in the home's bar and living spaces, encouraging seamless indoor-outdoor flow between the building's seaside and courtyard garden, where striking repetition of timber screens adds drama.





PHOTOS ELSA YOUNG



SEA CHANGE

A BEACHSIDE HOME ON **DURBAN'S NORTH COAST**

REINVENTS ESTATE LIVING

PACKING A VISUAL PUNCH
WITH A NEW WAVE
OF COASTAL STYLE
AND **MALIBU CHARM.**

W

E'RE ALL GUILTY OF HAVING DONE IT.

Invited into a seaside home, we bypass its entertainment areas, occasionally its hosts, making an immediate beeline for the outdoor spaces beyond, seeking the soul-soothing, sensory rewards they offer: sunshine glinting golden on the ocean's surface, the chalky aroma of baked sand. So for the young Johannesburg family relocating to KwaZulu-Natal's beachside Zimbali estate, largely occupied by holiday houses, a new home that broke with old coastal style conventions was essential.

Their house, through both its architecture and interior design, was to stand out, and be as seductive as the ocean views it offered. Eager to upturn the architectural regulations imposed by the estate's committee, the homeowners enlisted architect Sean Godfrey of Masterworx Architectural Design, insisting on a break from the pervasive Balinese resort style. In search of an interior aesthetic more contemporary than their Bryanston home, the couple were inspired by their travels along America's West Coast, and their appreciation of its relaxed yet tailored decorating. Recognising like minds, they appointed Durban design duo Kelsey Boyce and Bruce Fyfe of Fyfe Boyce.

"We are great admirers of American designer Jeffrey Alan Marks, who captures the same laid-back coastal feel that we like to inject into our projects, so we proposed to our client a Malibu feel with an African twist," says Kelsey. Inviting the outdoors in was an obvious starting point. An edit of local and imported fabrics in natural tones and textures, richly layered for a luxurious effect, does just that, echoing the beach below. Throughout the house, the repetition of blues and whites mirrors views across the water, and metallic accents add Malibu glamour, while a combination of raw wood and tactile woven finishes firmly contextualises the home on African soil. A statement piece – and one of Kelsey's favourite spaces – the custom-designed bar includes an oxidised copper base, the colours of which reference the lush vegetation. "Our interiors are intended to be lived in. We needed to create a home that is as comfortable as it is beautiful," comments Bruce, adding, "We wanted the clients to feel like every day is a holiday."

This emphasis on barefoot living is equally apparent in the architecture, a key requirement of which was sea views throughout the building. Consequently, expansive walls of glass fold away for seamless indoor-outdoor flow. "We insisted on a space that matched how we live and entertain," says the owner. "We fill our home with family and friends and laze around the pool." Appearing at first glance to disappear beneath the bar, the pool connects the seaside to the courtyard garden. Timber screens, sheltering the bedrooms above, add drama to this play space. "Designed to be automated, the screens allow in as much natural light and ventilation as desired, while always ensuring privacy," comments Godfrey, the architect. Like many of the home's other considered choices, such design creativity not only guarantees comfort, but also packs a visual punch. Which, for a young family in search of something new, is nothing short of a sea change.

**"THIS HOME
WAS DESIGNED
TO STAND OUT
NOT FIT IN."
- BRUCE FYFE**

fyfeboyce.co.za | masterworx.net



One of designer Kelsey Boyce's favourite spaces within the home, the entrance hall is given rock-star edge by a feature wall comprising backlit geometric timber panels. A slatted ceiling allows for the play of sunlight.



Fyfe Boyce designed the bar, a definite statement piece, and its copper panels were created and oxidised by artist Brendon Edwards. The bar stools are upholstered in an outdoor vinyl by Kravet, increasing their weather resistance.



THE COUPLE
WERE INSPIRED
BY THEIR TRAVELS
ALONG
AMERICA'S WEST COAST,
AND THEIR APPRECIATION
OF ITS
**RELAXED
YET TAILORED**
DECORATING.



ABOVE In the home's covered veranda, a pale green sofa upholstered in St Leger & Viney's Chromatics "Meadow", along with an abundance of tropical indoor foliage, echoes the verdant vegetation beyond.

BELOW The kitchen's clean lines reflect the strong linearity of the home's architecture. The island is clad in Neolith's Calacatta, and the bold backsplash is a Blue Agata granite slab from Womag.

OPPOSITE "There's no need for an outdoor space to look any less luxurious than an indoor space," comments Kelsey on the combination of untreated wood, hints of metallic and Thibaut's graphic Parterre fabric that defines the terrace's living area.



"WE PROPOSED
TO OUR
CLIENT
A **MALIBU FEEL**
WITH AN
AFRICAN TWIST."
- KELSEY BOYCE





ABOVE The octagonal Chinese lattice mirror creates a feature wall in the master bedroom. Not only does it reflect endless ocean views, but the graphic pattern also pairs well with Jeffrey Alan Mark's Templin fabric on the ottomans.

BELOW Bianco Carrara marble introduces femininity to an otherwise architectural and masculine master bathroom. The door leads from the his-and-hers showers to a private screened terrace.

OPPOSITE The pool, which appears to extend below the bar, continues to the seaside terrace. The family maximises the use of this space, taking advantage of the ocean views. An edit of Thibaut's outdoor fabrics reflects the colours of the water.



"OUR INTERIORS
ARE INTENDED
TO BE **LIVED IN.**
WE NEEDED TO CREATE
A HOME
THAT IS AS **COMFORTABLE**
AS IT IS **BEAUTIFUL.**"
- BRUCE FYFE